



Pierce County

LINX

Legal Information Network Exchange

Changing the way we do
business

NCSC E-COURTS

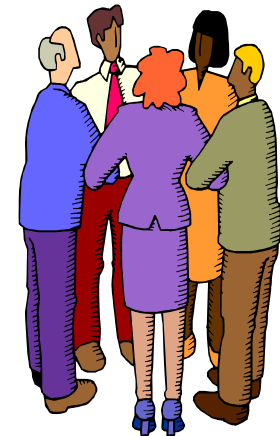
December 2004

What is it?



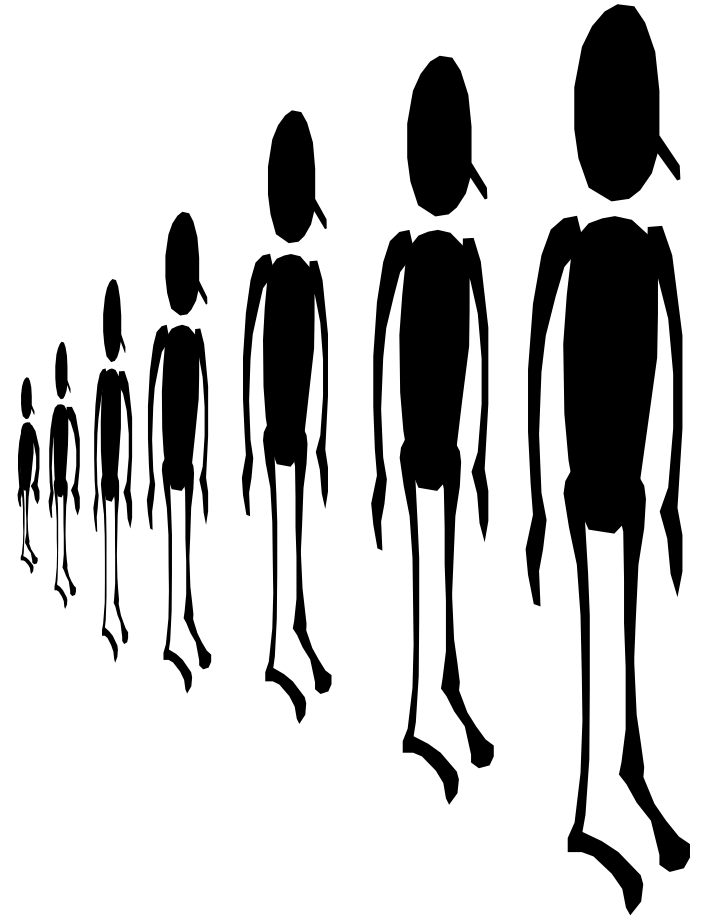
■ Integrated Database Shared Among Pierce County Justice Agencies.

- Prosecutor/Attorney General
- Assigned Counsel (Public Defender)
- Superior Court Administration
- Superior Court Clerk
- District & Juvenile Court Probation
- Jail / Corrections
- Juvenile Court
- Sheriff



Other Users

- Pierce County Alliance
(Breaking the Cycle Grant Program)
- LESA Records
(Law Enforcement Support Agency)
- State Agencies
- Private Attorneys
 - Currently over 2000 Registered Users
- Law Enforcement Agencies
- Media
- Private Businesses
- Public



Who Manages It?

- Direction and priorities are established by Safety and Judicial Technical Committee which is comprised of administrative representatives from each Pierce County Justice Agency.
- Funding is shared by Safety and Judicial departments
- IS has a S&J software development team of 10 programmers dedicated to the LINX application.
- Key departments have end-user developers dedicated to work along with the IS team.

LINX Staffing



- Information Services Safety and Judicial Team
 - **10 Programmers**
 - **15,660 programming hours for 2004**
 - Maintenance 3,150 hours
 - Project Management 500 hours
 - Team Meetings 750 hours
 - 8 Departments actively involved in LINX Development 250 hrs each
 - 2 Departments 100 hrs each
 - **Actual Programming hours available for projects 8560**
 - 2004 Project list hours 14060
 - 5500 project hours will be deferred into 2005

LINX Development Milestones



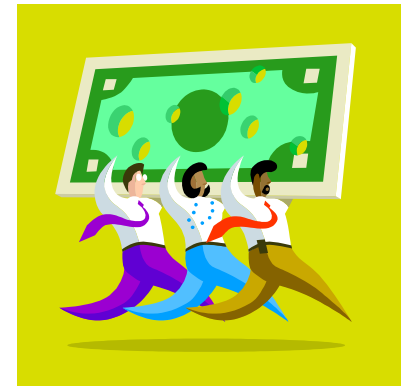
- 9/92 Development of LINX Began.
- 5/93 PA, Superior Court, and DAC implement felony case management within LINX.
- 1/96 Superior Court Clerk is added as a LINX partner.
- 7/96 Civil case management is implemented for Superior Court.
- 12/99 Corrections implements LINX as their jail management system.
- 1/02 LINX becomes official record of court as Clerk launches imaging project.
- 6/02 First Internal documents E-Filed
- 3/03 E-Filing of Calendaring Documents
- 7/03 Images made available to Attorneys over internet
- 11/04 Generic E-Filing
Subscription ordinance approved



Clerk's Imaging Development

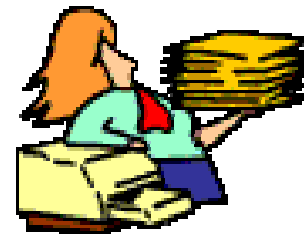
- July 2000 Development Team traveled to 5 counties to research.
 - Chelan County
 - Kitsap County
 - Thurston County
 - Clark County
 - King County

All used outside vendors
Most complained about tech support
Future upgrades and support?
Longevity of outside vendors?
- October 2000, Council approves \$300,000 supplemental funding
- June 2001, Purchased Equipment and Software
 - 2 Bell and Howell Scanners, PC's, disk storage, back up system
 - Adobe Acrobat (100 Licenses)
- **Total cost of project is \$230,000**



Imaging Implementation

- June 2000 Pilot with Domestic Violence Cases with Desktop Scanners
- July 2001 Pilot with Archive Cases with high speed scanners
- January 2002
 - LINX becomes the official record of Pierce County Superior Clerk and Juvenile Court Clerk.
 - Imaged Court Documents are available to other safety and judicial agencies, from their offices.
 - Distribution to LESA Records of Domestic Violence documents thru a Document Queue.
- April 2002
 - Public access terminals set up in Clerk's Lobby.
- Summer 2002
 - Electronic Service of Subpoenas to Pierce County Sheriff by Prosecuting Attorney, with electronic filing of the Return of Subpoena with the Clerk.
 - Started electronic filing of the Notices of Appearance by D.A.C.
 - Distribution of Criminal Bench Warrants to LESA Records thru a Document Queue.



Sharing of Information

Document Queue for jcavali (Janine Cavalier)

Queue: JUVENILE Search

Opened By	Status	Date	Cause Number	Description
	Accepted	04/15/04	04-8-00811-2	Notice of Appearance
	Accepted	04/15/04	04-8-00712-4	Notice of Appearance
	Accepted	04/15/04	04-8-00714-1	Notice of Appearance
	Accepted	04/15/04	03-8-02716-0	Return on Subpoena
	Accepted	04/15/04	04-8-00809-1	Notice of Appearance
	Accepted	04/14/04	04-8-00789-2	Notice of Appearance
	Accepted	04/14/04	04-7-00649-3	Notice of Appearance
	Accepted	04/14/04	04-7-00651-5	Notice of Appearance
	Accepted	04/14/04	04-7-00650-7	Notice of Appearance
	Accepted	04/14/04	03-7-01540-1	Notice of Appearance
	Accepted	04/14/04	04-7-00645-1	Notice of Appearance
	Accepted	04/14/04	04-7-00646-9	Notice of Appearance
	Accepted	04/14/04	04-7-00637-0	Notice of Appearance
	Accepted	04/14/04	04-7-00643-4	Notice of Appearance
	Accepted	04/14/04	04-7-00644-2	Notice of Appearance

75 documents retrieved.

Reviewing Scanned Images



Imaging Documents



Safety/Judicial Staff Access

- How have we changed?
 - Files no longer needed at employees desks.
 - Higher percentage of doc's available for instant viewing
 - 24/7 Availability
 - Access by multiple parties at same time
 - Access from Remote Locations
 - Courtroom/Wireless Access
 - Law Enforcement
 - In Offices
 - In Patrol Cars
 - Safety and Judicial Offices (DAC, PA, etc)
 - Internet (E-Access Pilot Attorneys)
 - Enhanced file Security
 - Retrieval Costs lowered



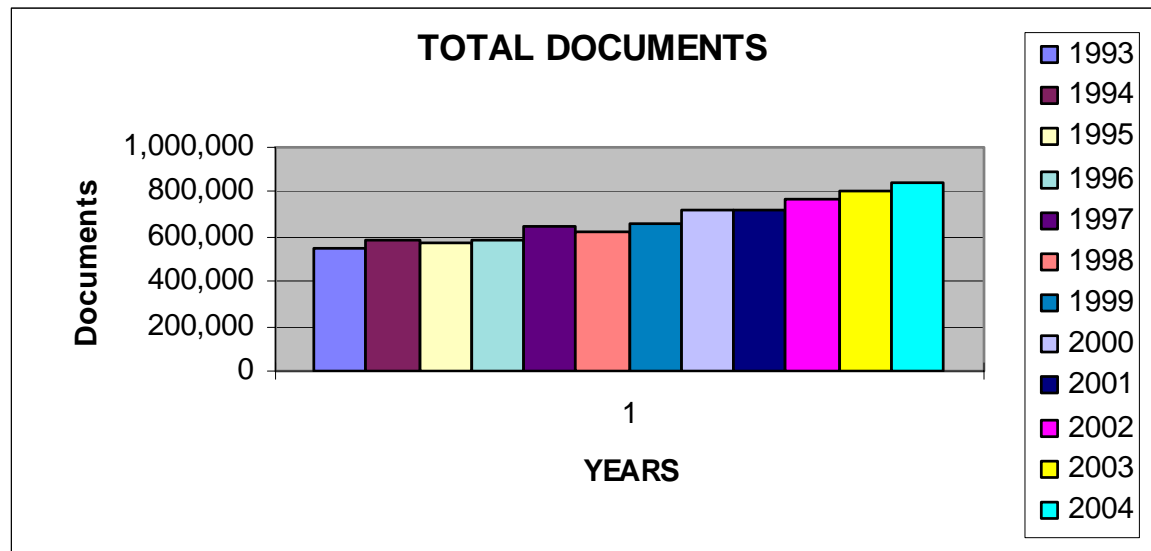
Behind the Numbers



■ Superior Court Clerk Filings

- 2002- 751,785 Documents
- 2003- 805,511 Documents
- 2004- 840,000 Projected
- 65% increase in filings since 1993

- 450,000 Total Files Stored
 - 225,000 Main Vault
 - 225,000 Archive Vault Offsite



Changing the Way We do Business

- Scanning
 - New Filings
 - Archive Files
- E-Filing
 - Initial plan
 - Internal Documents
 - Long Range plan
 - External Documents
 - Pattern Forms
 - Generic Documents
 - Resource Savings
 - Immediate Access
 - No Scanning
 - No Docketing
- E-Access (Remote Access to court files)
 - Security
 - County Departments Access
 - Attorney Access
 - Value/Revenue



Imaging Milestones 2003

- January 2003
 - LINX becomes the official record for Involuntary Commitment Unit at Western State.
 - Electronic filing of Administrative, in county documents. (All Scheduling Doc's, Juvenile Judgment Letters, Notice of Delinquency).
- February 2003
 - Initiated Document distribution in LINX using Queues for Prosecutor.
 - Electronic Child Support Papers sent to State of Washington Division of Child Support
 - Before one person spent all day faxing, now about 20 minutes to FTP
- March 2003
 - Electronic filing of Note's of Issue from Kiosk in Clerk's Lobby, and from Attorney's Offices using the LINX web site.
- April 2003
 - Document exchange with Supreme Court
 - Clerk's Papers for the Yates murder case sent on CD 12,000 pages
- May 2003
 - First Electronically processed Court Orders (created, signed, and filed).
 - Clerk's Dismissals
 - Order Extending Criminal Judgment
 - Electronic Judgment and Sentence paperwork to State Sentencing Guidelines using FTP.
- July 2003
 - Electronic Access to filed public documents given to Attorneys, free trial period.
- August thru December 2003
 - Electronic Subpoenas to other Law Enforcement Agencies
 - Various pattern form documents add to the web for E-Filing

E-Access Issues

■ Privacy issues

- GR 22 Family Law Records (Oct 2001)
 - SS #'s redacted from pattern forms
 - Financial Source Documents sealed
 - Burden on parties to secure information
- GR 31 Access to Court Records (Oct 2004)
 - Access to court records is not absolute and shall be consistent with reasonable expectations of person privacy.



■ Public perception/concern

- Personal information available
- People will know where I live
- Identity theft

E-Access Value

- Value for Pierce County
 - Less congestion at County City Building
 - Security
 - Parking
 - Less resources needed at public counters
 - Revenue
- Attorneys/Public
 - Less Travel Time
 - The average cost of a round trip to the court house by an attorney is \$50.00
 - Parking Frustration
 - Convenience
 - 24/7 Access
 - Multiple access to files
 - Copy fees
 - Better access for disabled persons



Subscriptions November 2004

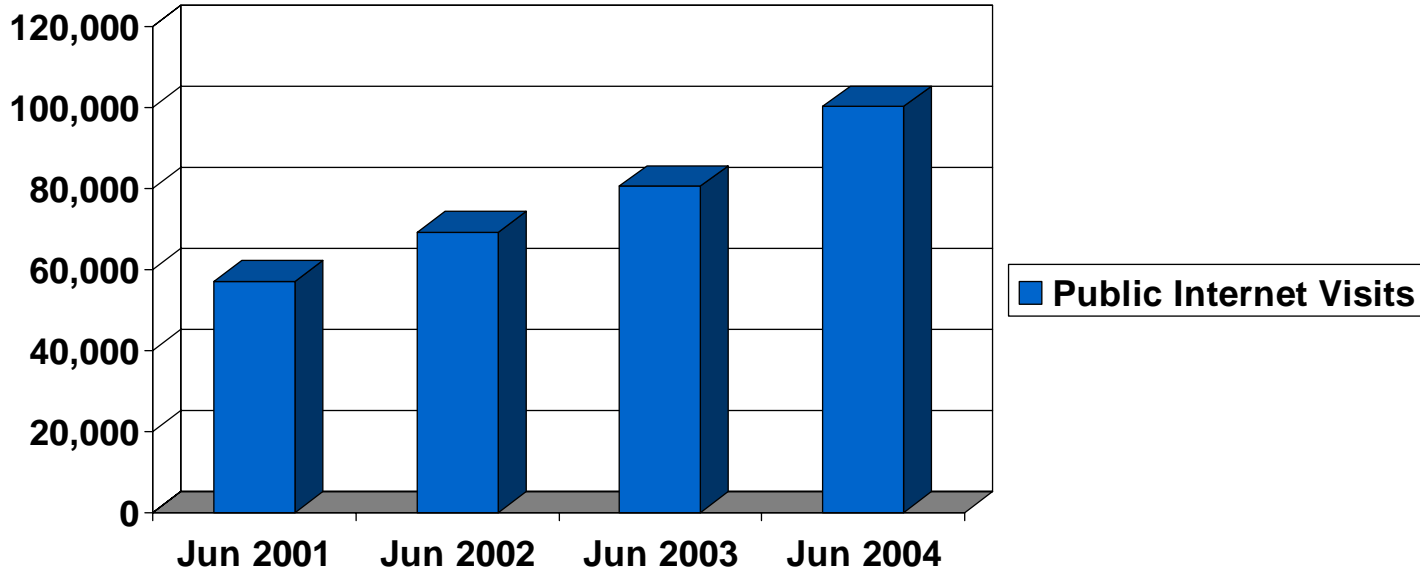
- Pierce County passes Subscription Ordinance
 - Allows the Clerk to Charge for access to imaged documents via the WEB
 - Cost to Subscribe
 - Attorney \$150 per year or \$25 per month
 - Litigant \$25 per case
 - Commercial \$1000 per year
 - Commercial Individual case \$250

- Generic E-Filing of Civil Documents
 - Free Service



Internet Usage

- Visits increase as attorneys and public learn about the availability of jail and court information.



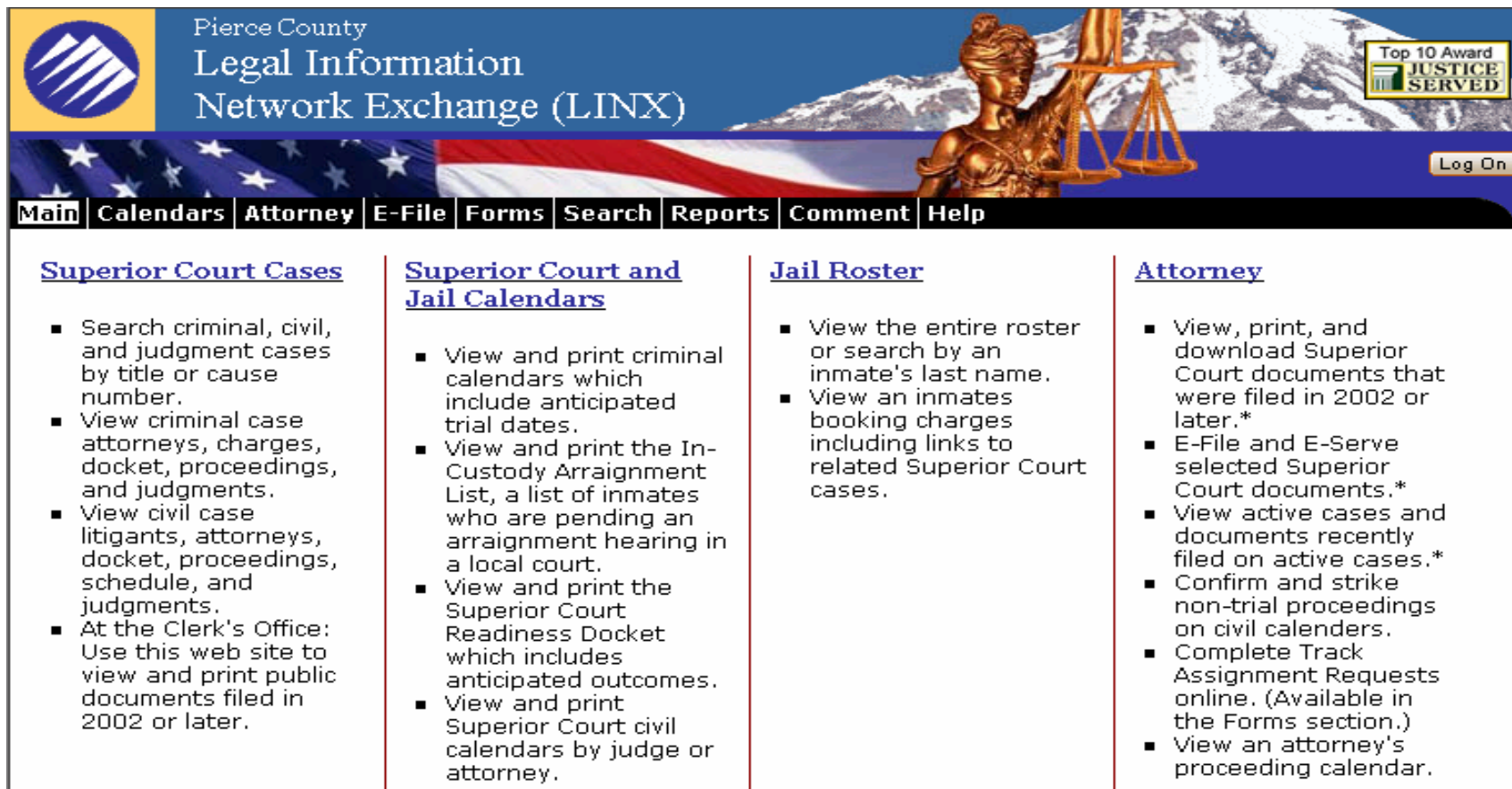
2004 Domestic Violence Kiosk

- First Domestic Violence Kiosk in Washington, City of Gig Harbor
 - Victim only has to fill out information once
 - Can be done from a remote location
 - Statements easier for Commissioner/Judge to read
 - Documents can be electronically processed
- December 2004 New DV Kiosk, City of Lakewood
- Requests for additional DV Kiosks
 - Puyallup
 - Spanaway
 - Bonney Lake

LINX

Pierce County's "Legal Information Network Exchange" System

www.co.pierce.wa.us/linx



Pierce County
Legal Information
Network Exchange (LINX)

Top 10 Award
JUSTICE
SERVED

Log On

[Main](#) | [Calendars](#) | [Attorney](#) | [E-File](#) | [Forms](#) | [Search](#) | [Reports](#) | [Comment](#) | [Help](#)

Superior Court Cases

- Search criminal, civil, and judgment cases by title or cause number.
- View criminal case attorneys, charges, docket, proceedings, and judgments.
- View civil case litigants, attorneys, docket, proceedings, schedule, and judgments.
- At the Clerk's Office: Use this web site to view and print public documents filed in 2002 or later.

Superior Court and Jail Calendars

- View and print criminal calendars which include anticipated trial dates.
- View and print the In-Custody Arraignment List, a list of inmates who are pending an arraignment hearing in a local court.
- View and print the Superior Court Readiness Docket which includes anticipated outcomes.
- View and print Superior Court civil calendars by judge or attorney.

Jail Roster

- View the entire roster or search by an inmate's last name.
- View an inmates booking charges including links to related Superior Court cases.

Attorney

- View, print, and download Superior Court documents that were filed in 2002 or later.*
- E-File and E-Serve selected Superior Court documents.*
- View active cases and documents recently filed on active cases.*
- Confirm and strike non-trial proceedings on civil calendars.
- Complete Track Assignment Requests online. (Available in the Forms section.)
- View an attorney's proceeding calendar.